

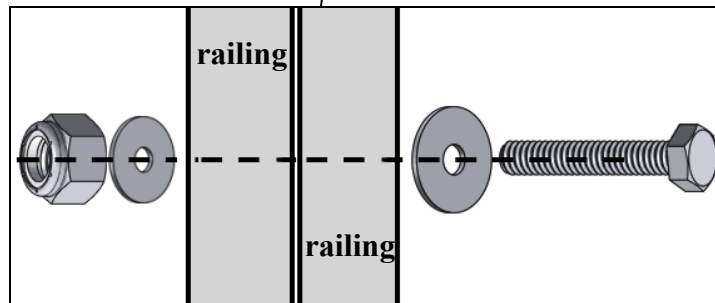
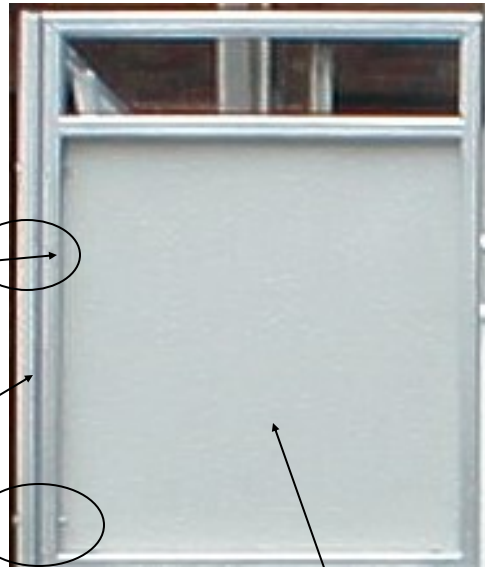
**Secure Sections**

*Bolts, washers and nylocs are supplied to secure sections together (see picture )*

*Forward and rear sections are attached inside the side sections.*

Side section of railing

Rear view of railing



Railing is bolted through both sections in the above order



**U-FAB BOATS®**

**Product/Service Information  
Standard Railing Installation**



*Visit our web site at  
[www.u-fabboats.com](http://www.u-fabboats.com)*

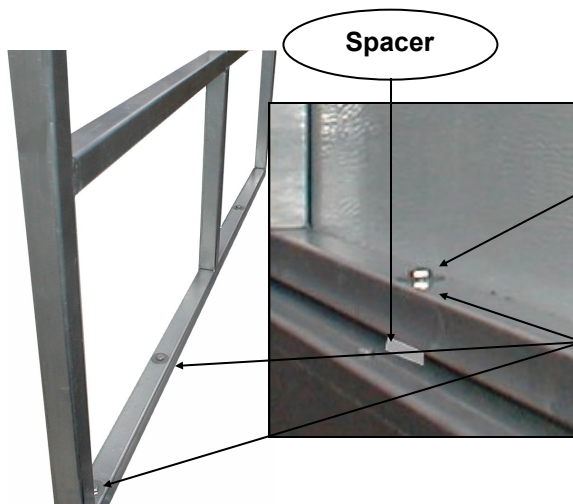
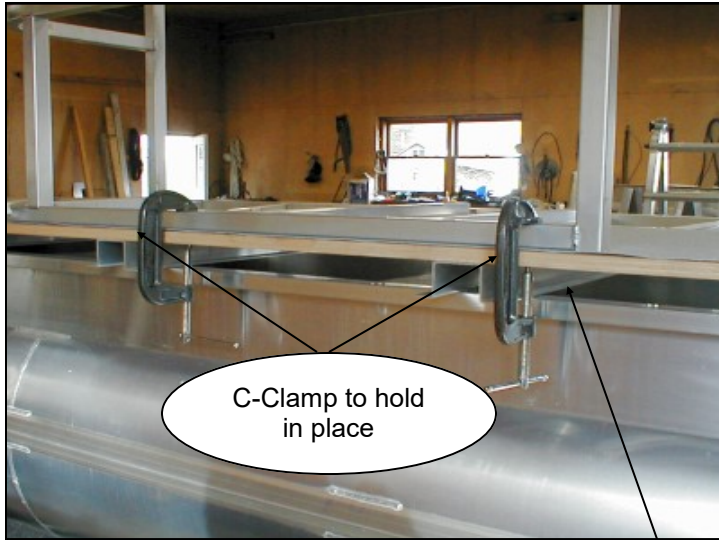
459 Highway 29, R.R. #4  
Smiths Falls, Ontario, K7A 4S5  
Canada

Phone: 613-283-1888 Fax: 613-205-0885  
E-mail: [ken@u-fabboats.com](mailto:ken@u-fabboats.com)

1

### Railing Installation

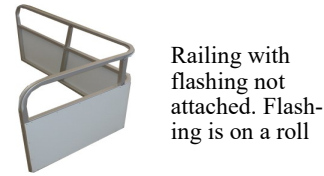
1. Position the railing on the deck without the flashing installed using c-clamps to hold it in position. Leave about an extra 3/8" - 1/2" opening at the gate areas to allow for the hinges.



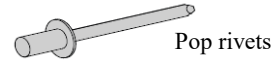
**Note:** Make sure cross-member does not prevent bolt and nut from being inserted through railing

Drill approx. every 17" through rail and deck (before Applying flashing)

6



Railing with flashing not attached. Flashing is on a roll



Pop rivets



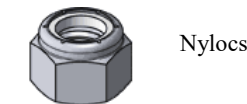
Standard door Latch



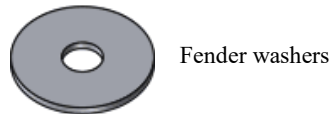
Door and railing braces Standard



Door hinges



Nylocs



Fender washers



Flat washers

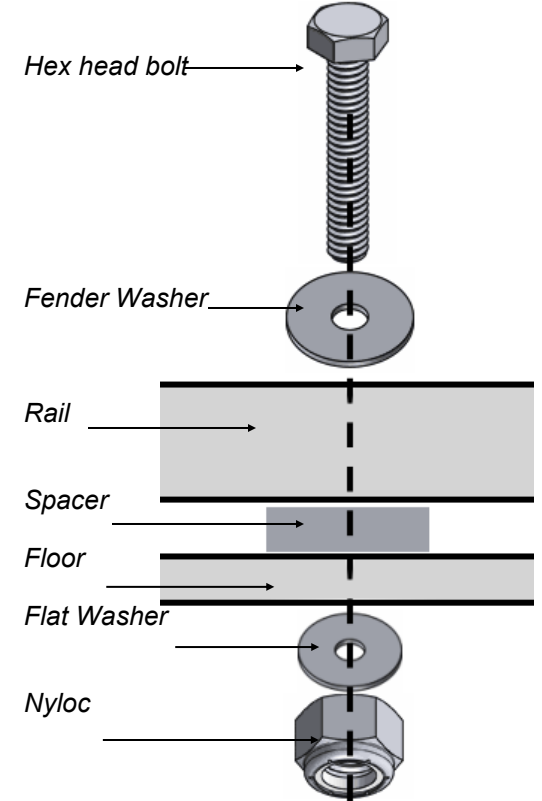


Hex head bolts



Pan head screws

### Bolt, Nut and Railing Assembly



3

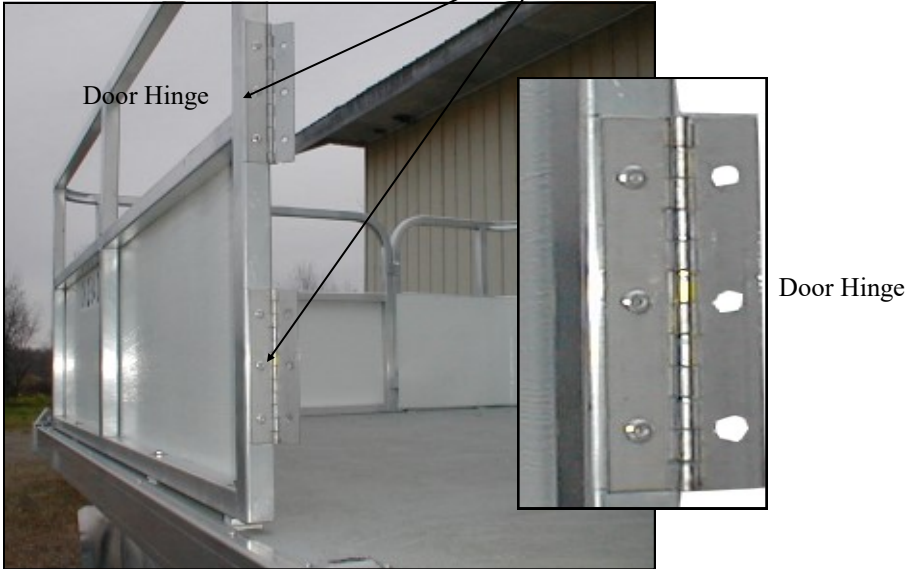
5. Cut the white aluminum flashing to the lengths required. To cut the flashing, use a straight edge and a utility knife to score the surface and you may have to the cut a couple of times. Then bend the flashing at the cut and it will break easily. Use sandpaper etc. to remove any burrs on the edges.

Flashing should be approx. 1/8" up from bottom of railing (see page 2)

6. Then take the railing with the flashing attached and re-position it on the deck and match up the holes.

7. There are 1/4" thick aluminum or clear acrylic spacers (see page 1) that also need to get drilled ( 1/4" ) and they act as spacers to make the deck a self bailing deck.

Drill holes for door hinges (3 holes)



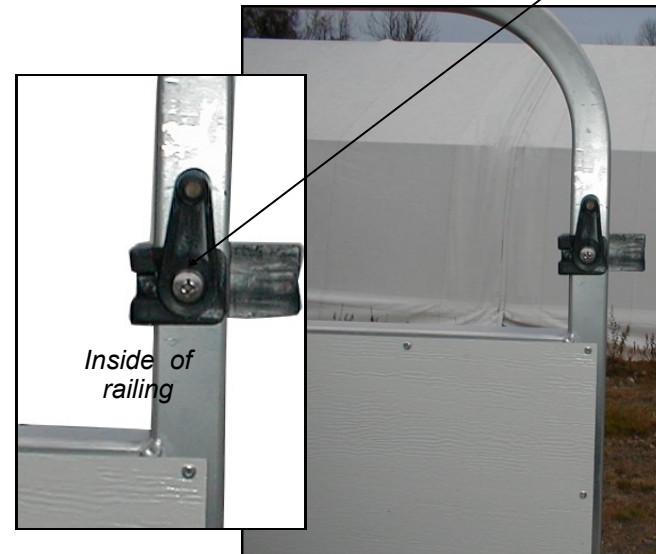
4

8. Install the bolts to attach the railing. (see page 6 for order)

9. The hinge should be installed on the forward piece of railing so that the wind will not catch it when the boat gets transported.

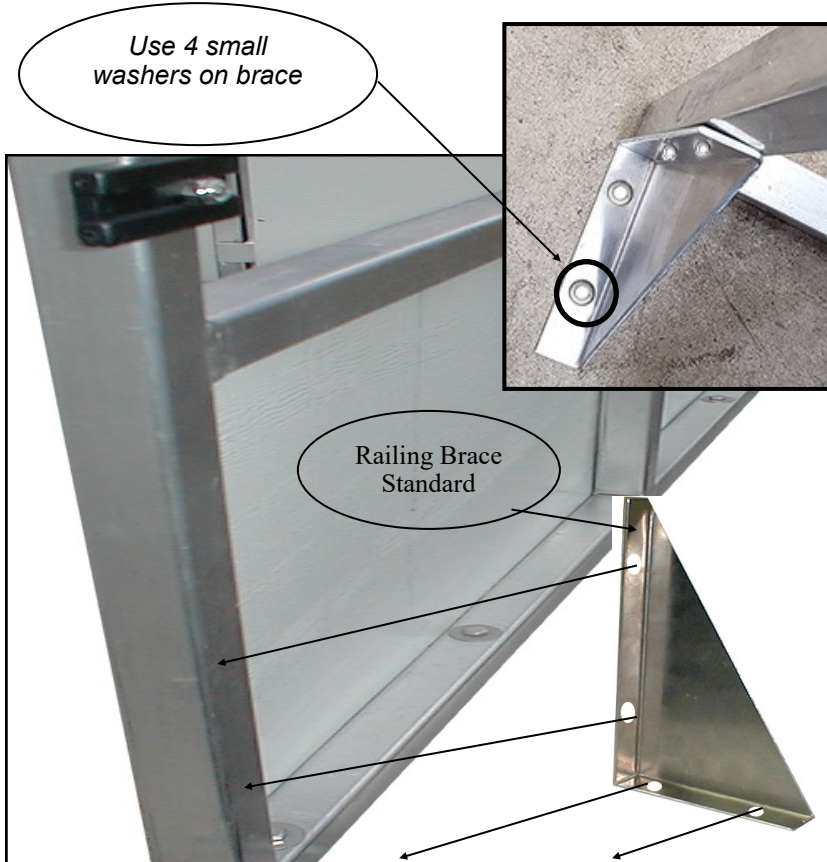


Drill hole for door latch (1 hole)



10. Inspect the gate latches and you will notice that there is a "R" and "L" (only for standard railing) Mark location of each latch.

11. Install the gate braces. Drill railing and brace and attach brace with bolts to the railing and screw/bolt to flooring or screw brace to cross member. (depends on deck and railing layout)



2. Once the railing is positioned on the deck the way you want it, drill the necessary 1/4" holes through the bottom horizontal square tube. (Page1)

3. Use the 1/4" drill bit ( about every 17" )

4. Remove the c-clamps.

**Please note:**

