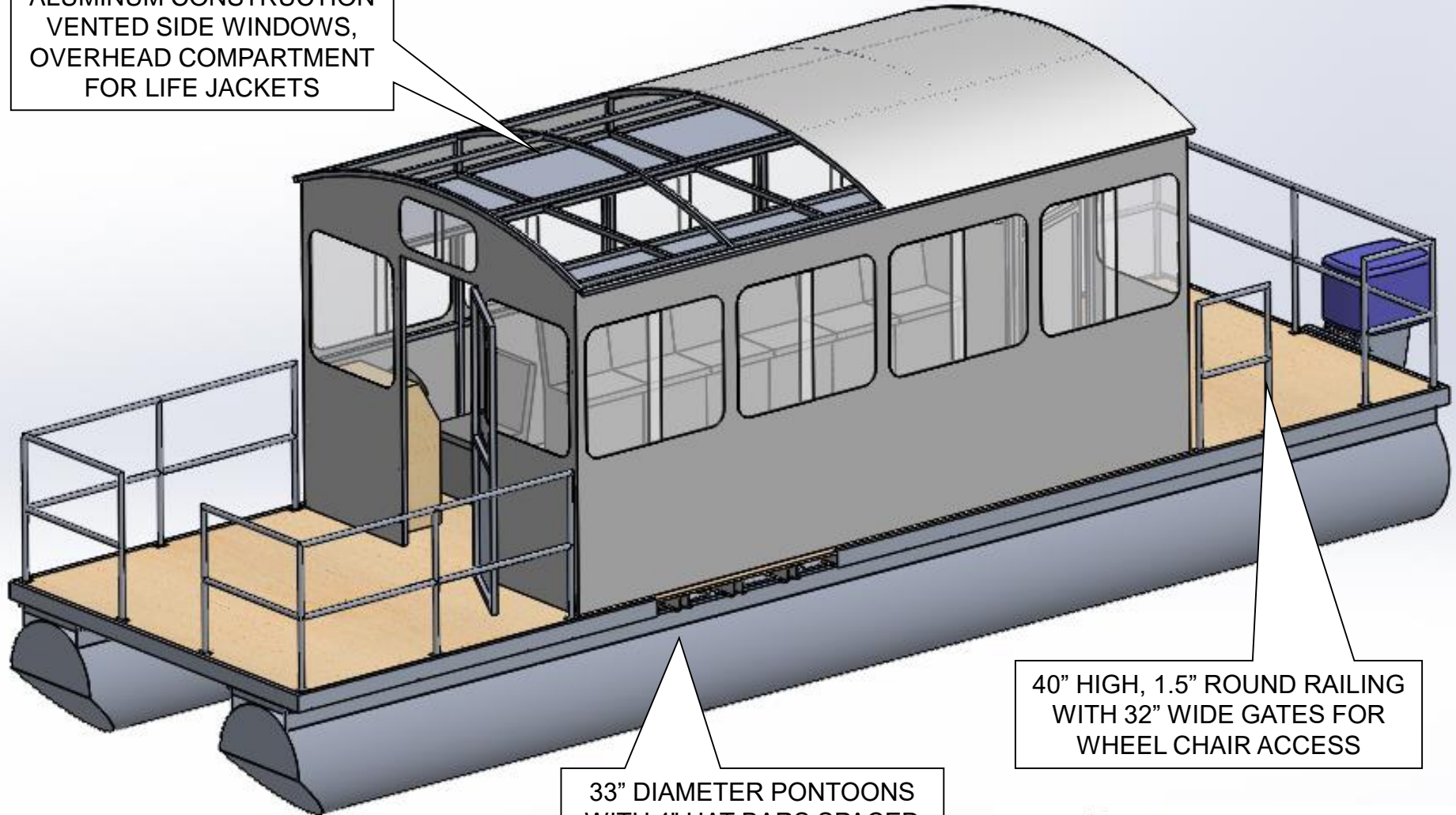


# 12-PASSENGER BOAT

32FT LONG, 10FT WIDE

ESTIMATED WEIGHT OF BOAT KIT 5000 LB  
MAX. LOAD CAPACITY 7000 LB (PONTOONS HALF  
IMMERSED), EXCPECTED NORMAL LOAD 3000 LB.

CABIN 17' x 9.5' x 8.5' HIGH  
ALUMINUM CONSTRUCTION  
VENTED SIDE WINDOWS,  
OVERHEAD COMPARTMENT  
FOR LIFE JACKETS



33" DIAMETER PONTOONS  
WITH 4" HAT BARS SPACED  
18" AND 3/4" PLYWOOD. DECK  
EDGES CAPPED

40" HIGH, 1.5" ROUND RAILING  
WITH 32" WIDE GATES FOR  
WHEEL CHAIR ACCESS



**U-FAB BOATS**®

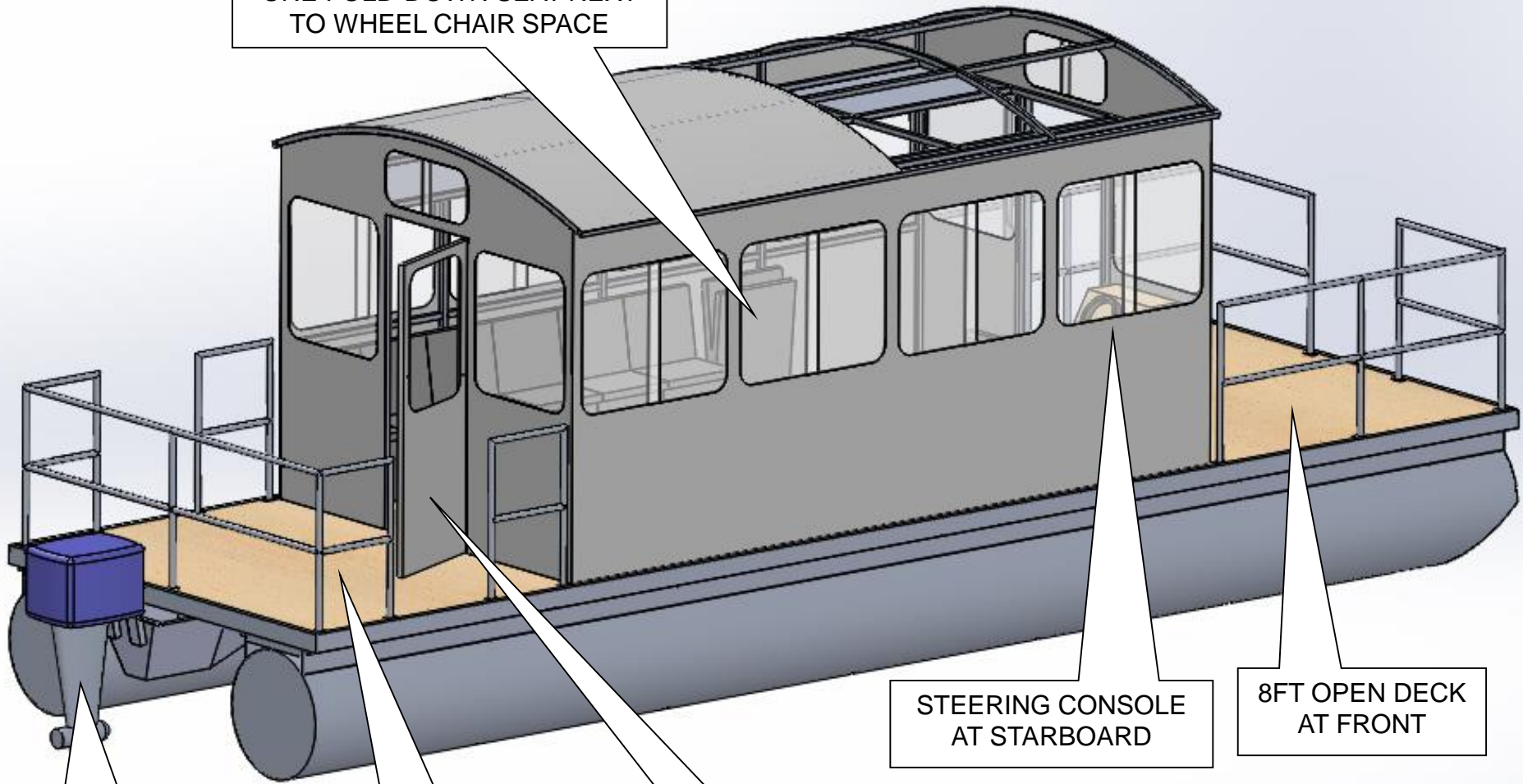
27MAY2015

# 12-PASSENGER BOAT

32FT LONG, 10FT WIDE

ESTIMATED WEIGHT OF BOAT KIT 5000 LB  
MAX. LOAD CAPACITY 7000 LB (PONTOONS HALF  
IMMERSED), EXCPECTED NORMAL LOAD 3000 LB.

2x6 SEATS ALONG SIDES WITH  
ONE FOLD-DOWN SEAT NEXT  
TO WHEEL CHAIR SPACE



STEERING CONSOLE  
AT STARBOARD

8FT OPEN DECK  
AT FRONT

SINGLE OUTBOARD  
ENGINE

7FT OPEN DECK  
AT FRONT

32"x80" CABIN  
DOORS

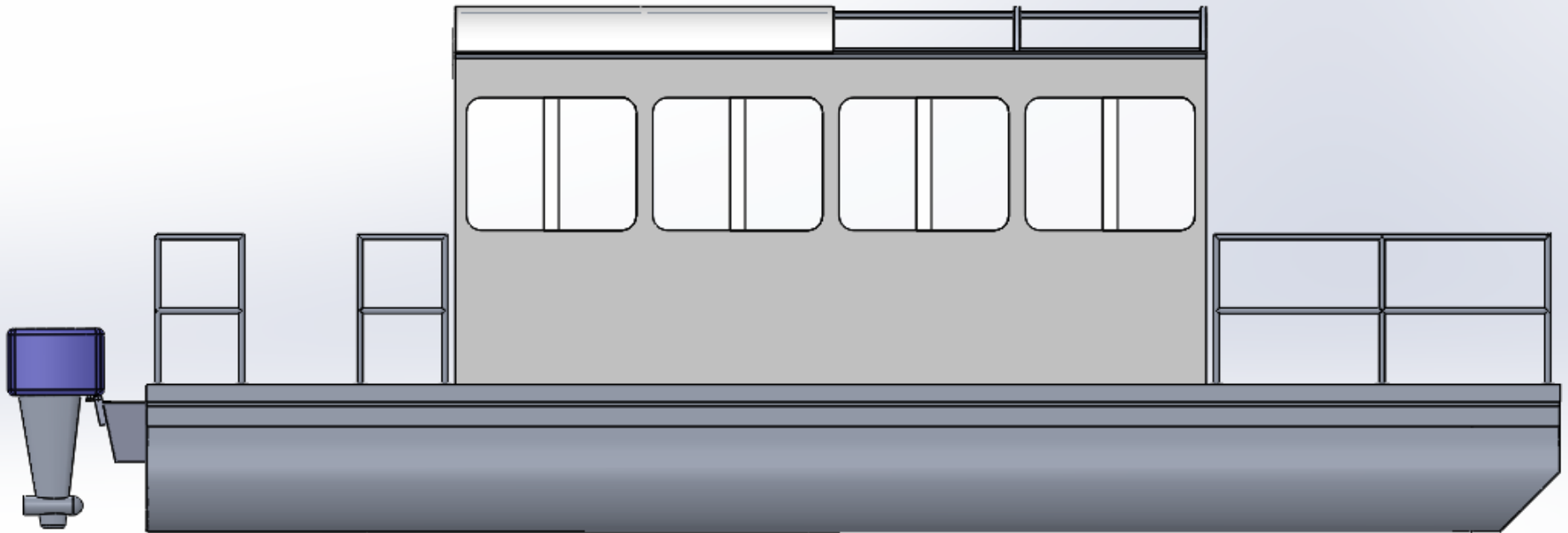


**U-FAB BOATS**®

27MAY2015

**12-PASSENGER BOAT**  
32FT LONG, 10FT WIDE

ESTIMATED WEIGHT OF BOAT KIT 5000 LB  
MAX. LOAD CAPACITY 7000 LB (PONTOONS HALF  
IMMERSED), EXCPECTED NORMAL LOAD 3000 LB.



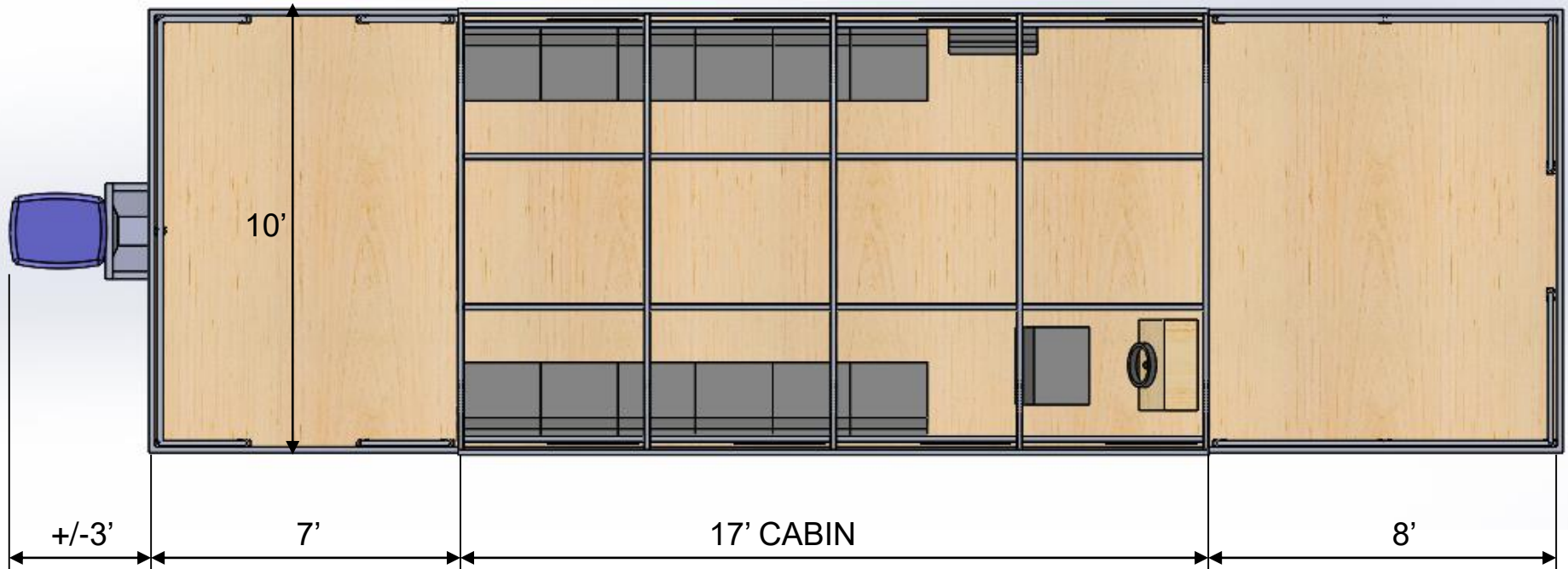
**U-FAB BOATS®**

27MAY2015

# 12-PASSENGER BOAT

32FT LONG, 10FT WIDE

ESTIMATED WEIGHT OF BOAT KIT 5000 LB  
MAX. LOAD CAPACITY 7000 LB (PONTOONS HALF  
IMMERSED), EXCPECTED NORMAL LOAD 3000 LB.



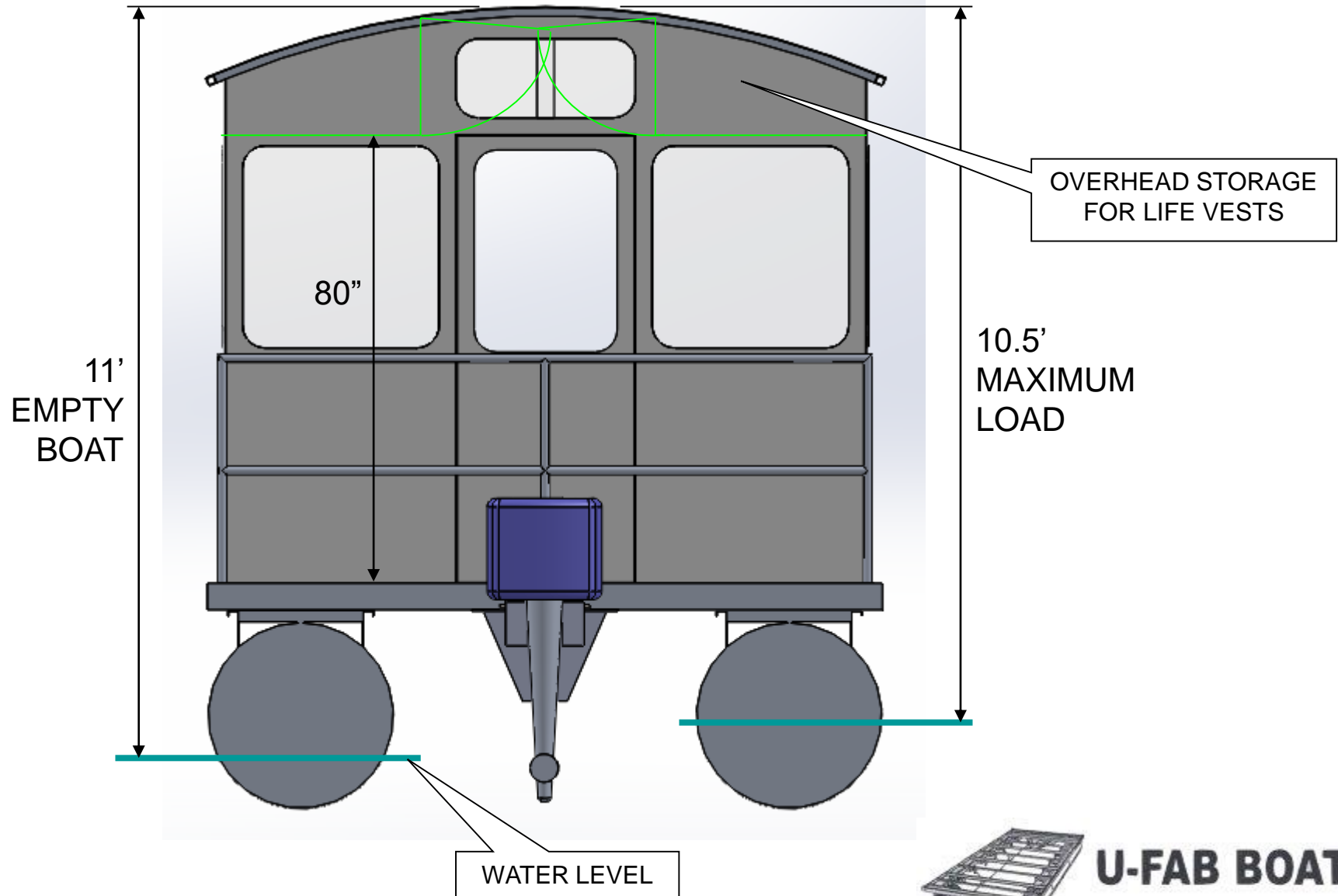
**U-FAB BOATS**®

27MAY2015

# 12-PASSENGER BOAT

32FT LONG, 10FT WIDE

ESTIMATED WEIGHT OF BOAT KIT 5000 LB  
MAX. LOAD CAPACITY 7000 LB (PONTOONS HALF  
IMMERSED), EXCPECTED NORMAL LOAD 3000 LB.



**U-FAB BOATS**®

27MAY2015